

# TROUBLESHOOTING

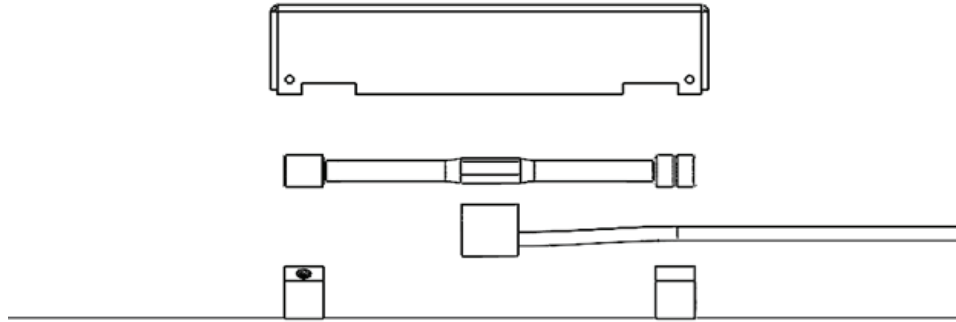
## Strain Sensor Bar & Pickup Coil



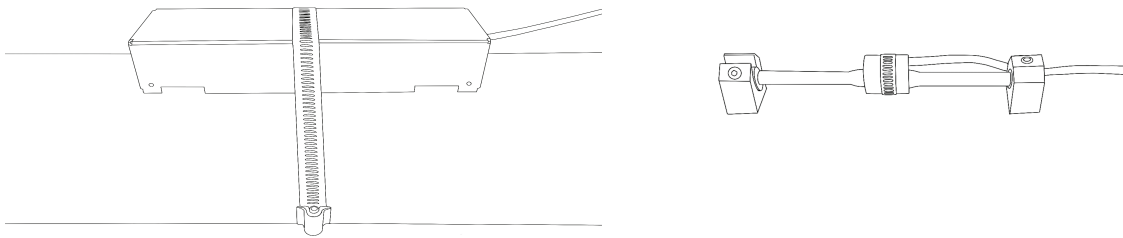
FOR 201-EBT-1XB, 201-EBT-2XB, 201-EBT-3XB, & 201-EBT-4XB

PP-003-0042 REV G

There are several reasons why a Right Weigh gauge might have trouble finding a sensor. If there is a problem, the gauge will read “Sen ‘\_’ Not Found” on startup, or “Bar ‘\_’ Not Found” (where ‘\_’ is the identifying letter or number of the sensor). Each time the gauge is powered on, it checks the sensors in order. If a problem is found with one of them, it stops checking and reports the error message. For example, if the system is installed on a tandem axle suspension, and the message is “Sen B not found” this means that sensor A is OK and working, but sensor B has failed. If the message is “Sen A not found” this means that sensor A is not working, but sensor B may or may not be working, since it hasn’t been checked yet.



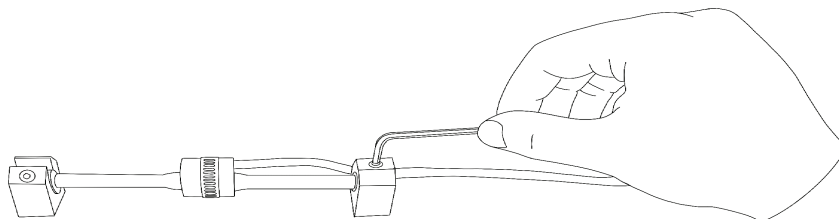
In order to diagnose a problem with the Spring Suspension Sensor Assembly, the metal cover will need to be removed. Loosen the hose clamp and slide it to one side. Gently lift the metal cover off to reveal the tension bar and pickup coil.



Following are the reasons why errors would show up, in order of likelihood.

### Problem 1: Tension bar preload is out of detectable range

If the tension bar is too tight or too loose, it will not be detectable by the gauge, this is the most common problem on new installations. If your gauge was working before, and now it’s not working, this likely is not the problem. Loosen all three set screws and carefully remove the tension bar. Once the tension bar is removed, turn the gauge off and back on to check if the sensor is detected. If the sensor is detected, reinstall the tension bar so that the frequency range is between 650 and 750 while the truck or trailer is empty (refer to the installation manual), and tighten down the mounting block screws.



CONTACT US!

Right Weigh, Inc. - (888) 818-2058 - [www.rwls.com](http://www.rwls.com) - [support@rwls.com](mailto:support@rwls.com)

Follow Us!



# TROUBLESHOOTING

## Strain Sensor Bar & Pickup Coil

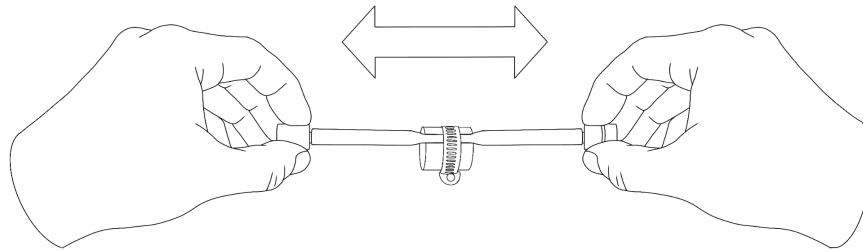


FOR 201-EBT-1XB, 201-EBT-2XB, 201-EBT-3XB, & 201-EBT-4XB

PP-003-0042 REV G

### Problem 2: The internal tension wire is broken

Under some circumstances, or after significant use, the wire inside the tension bar can break. If this happens the bar will need to be replaced. To check if the wire inside is broken, lightly pull on each end of the bar. If the wire is broken, the ends will easily come off. If the ends are firmly connected, the wire is still intact. If the wire is broken, contact Right Weigh customer service to purchase a replacement. Tension bars are considered a wear item. Replacements are covered under warranty for the first 3 years, but must be purchased after the warranty period ends.

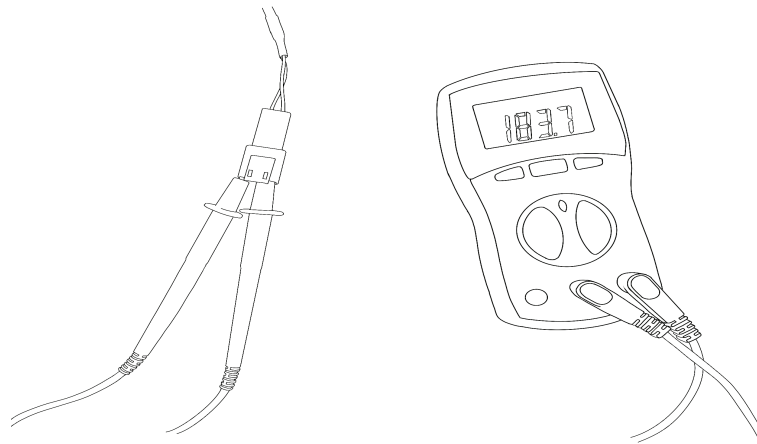


### Problem 3: There is a break or short in the cabling.

To test, disconnect the sensor cable from the back of the Right Weigh gauge. Using a multi-tester, check the resistance across the 2 wires in the cable going to the sensor. The resistance across the wires should be between 100 and 200 ohms.

- If it is an open circuit, check for breaks in the cable.
- If it is a dead short, or about 0 ohms, check for a shorted wire
- If you get a value outside the range of 100-200 ohms, the pickup coil will need to be replaced.

If the error is still shown after these potential problems are eliminated, it could be a problem with the gauge itself. Please contact Right Weigh for further assistance.



CONTACT US!

Right Weigh, Inc. - (888) 818-2058 - [www.rwls.com](http://www.rwls.com) - [support@rwls.com](mailto:support@rwls.com)

Follow Us!



# TROUBLESHOOTING

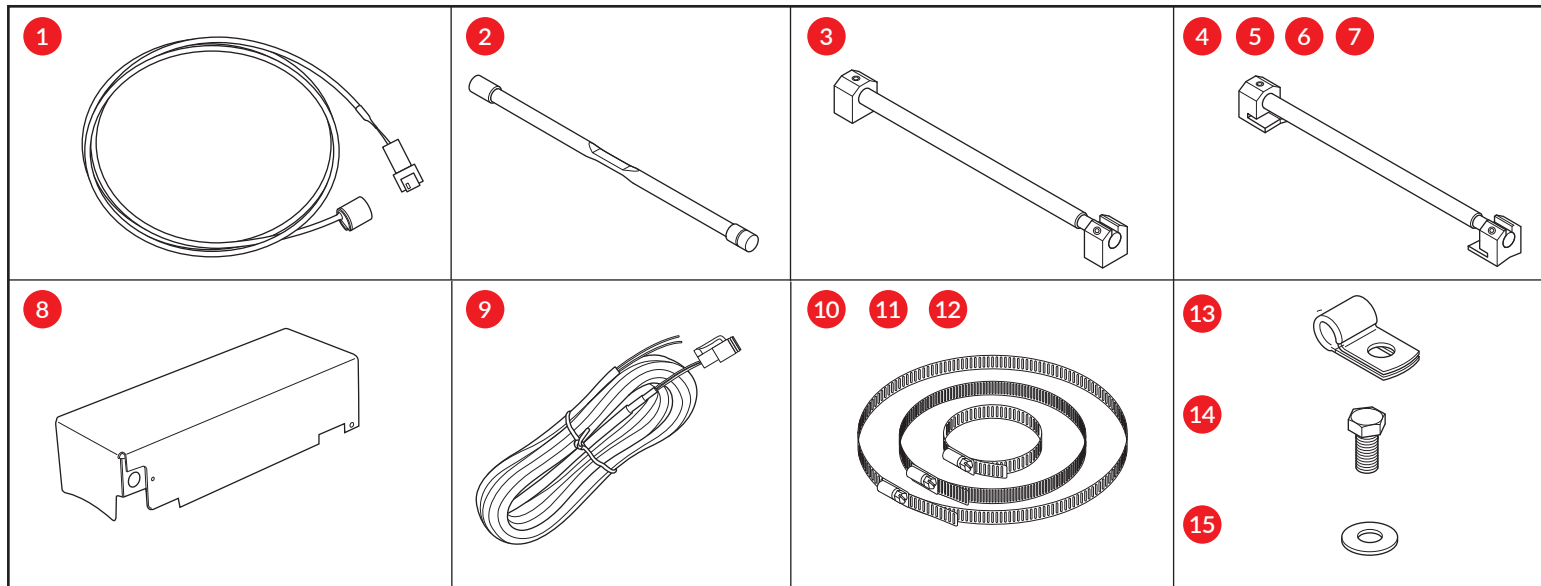
## Strain Sensor Bar & Pickup Coil



FOR 201-EBT-1XB, 201-EBT-2XB, 201-EBT-3XB, & 201-EBT-4XB

PP-003-0042 REV G

### REPLACEMENT PARTS:



Reference #	RW Part #	Part Description
1	EL-004-0054	Pickup Coil
2	EL-001-0002	Strain Sensor Bar
3	HW-010-0052	Strain Sensor Bar Mounting Block Welding Jig Assembly
4	HW-010-0044	Mounting Block for Epoxy Mount, Open Side (2 Set Screw Holes)
5	HW-010-0046	Mounting Block for Epoxy Mount, Closed Side (1 Set Screw Hole)
6	HW-010-0016	Alignment Dowel
7	HW-001-0001	Set Screw: 1/4-28 x 1/8" Hex Drive (Stainless Steel)
8	HW-010-0040	Metal Cover for Strain Sensor Bar Assembly
9	EL-004-0055	Extension Harness (25 Feet)
10	HW-011-0007	Worm Drive Hose Clamp: 4" - 9 1/8" Diameter (Vibration Resistant)
11	HW-011-0004	Worm Drive Hose Clamp: 4" - 6 1/8" Diameter (Vibration Resistant)
12	HW-011-0000	Worm Drive Hose Clamp: 19/32" Maximum Diameter
13	HW-011-0006	Loop Clamp: 3/16" ID, 1 1/8" Long
14	HW-001-0015	Hex Cap Screw: 1/4-20 x 1/2" (18-8 Stainless Steel)
15	HW-003-0001	Flat Washer: 1/4" (18-8 Stainless Steel)

CONTACT US!

Right Weigh, Inc. - (888) 818-2058 - [www.rwls.com](http://www.rwls.com) - [support@rwls.com](mailto:support@rwls.com)

Follow Us!

