



# Installation Manual

## DATA COMMUNICATION HARNESS For 201 Series Exterior Digital | 224-SK

For additional support contact:

United States and Canada:

Right Weigh, Inc.  
(503) 628-0838  
(888) 818-2058 - Toll Free (USA ONLY)  
[www.rwls.com](http://www.rwls.com)  
[support@rwls.com](mailto:support@rwls.com)

Australia and New Zealand:

Smart Truck Solutions  
+61 418 622840  
[rightweigh.com.au](http://rightweigh.com.au)



Right Weigh, Inc.  
Hillsboro, Oregon USA

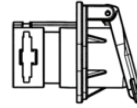
PP-003-0062 Revision C  
January 2021

# INSTALLATION

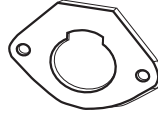


## PARTS INCLUDED:

① Data Communication Socket



② Gasket



③ 5/16" Mounting Bolt



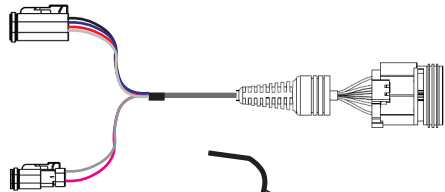
④ 5/16" Flat Washer



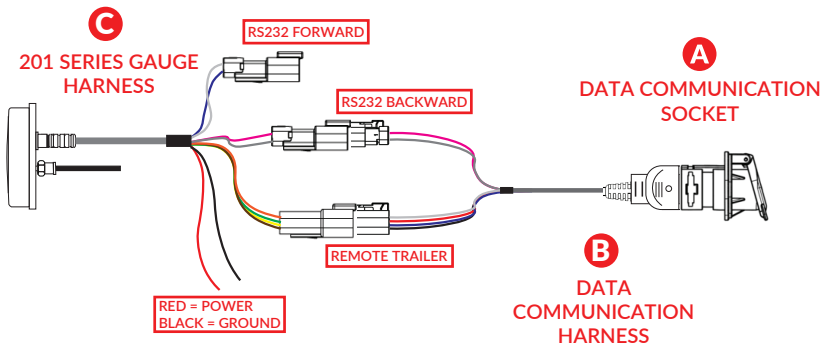
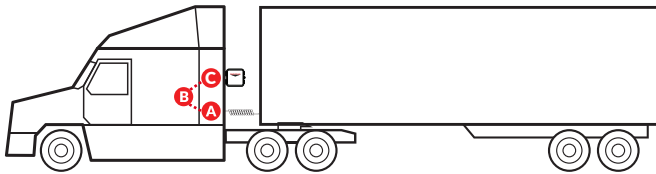
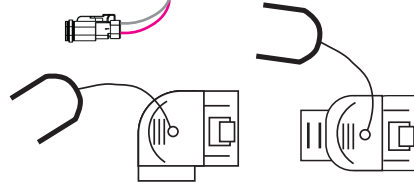
⑤ 5/16" Nylon Insert Locknut



⑥ Data Communication Harness

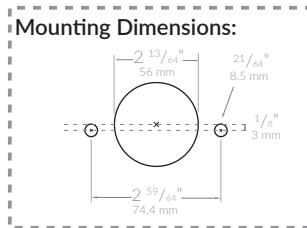
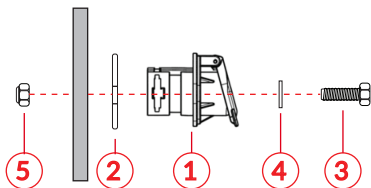


⑦ Backshell  
Straight and Angled



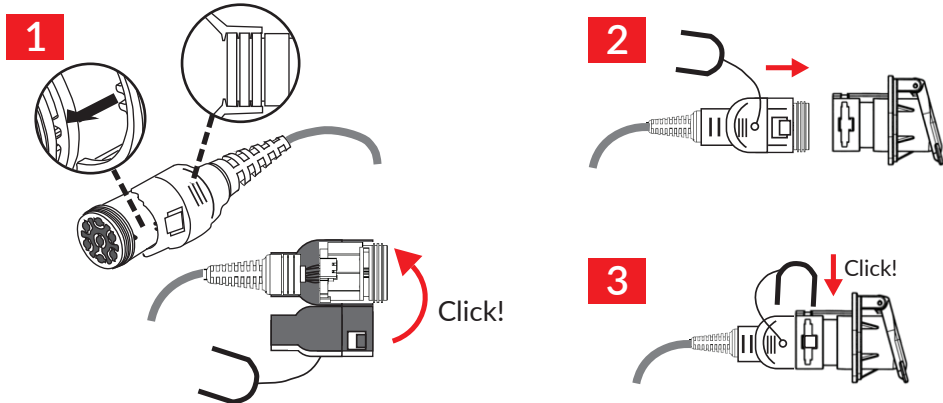
## A MOUNT DATA COMMUNICATION SOCKET

Mount the data communication socket to the back of the tractor where it is accessible to the driver. Create a cutout to accept the socket using the specified dimensions or source a mounting bracket for a standard 7 pole socket. Fasten the socket in place using the supplied hardware.



## B ASSEMBLE DATA COMMUNICATION HARNESS, BACKSHELL, AND SOCKET

Choose a backshell (straight or angled) that best fits your application. Insert the connector and strain relief bushing into one half of the backshell, making sure the cutouts in the connector are properly aligned with the alignment tabs on the backshell. Fold the other half of the backshell over to fully capture the connector and strain relief bushing; the two halves should snap together as they mate. Insert the connector and backshell assembly into the socket as shown. Lastly, install locking clip to secure connection.



## C CONNECT TO 201 SERIES GAUGE HARNESS

Insert the connectors on the opposite end of the data communication harness into their mating connectors on the 201 series gauge harness. The two position connector should mate with the connector on the 201 gauge harness that is labeled "RS-232 BACK".

Refer to 201 series gauge instruction manual for details on installing/operating the gauge.

Thank you for choosing to drive more and scale less! Here at Right Weigh, we are committed to making our products simple to install and easy to use. We understand that installation can vary between vehicles and yours may not be described in this manual. In any event, our technical support team is ready to answer your questions!



(503) 628-0838

(888) 818-2058 - Toll Free (USA ONLY)

+61 418 622840 - Australia & New Zealand



support@rwls.com

leigh@rwlsau.com.au - Australia & New Zealand



[www.rwls.com/how-to-calibrate-install/](http://www.rwls.com/how-to-calibrate-install/)

[rightweigh.com.au](http://rightweigh.com.au) - Australia & New Zealand

## IMPORTANT!

Please read instructions **COMPLETELY** and thoroughly before installation. Right Weigh, Inc. is not responsible or liable for product failure or vehicle damage due to improper installation. The installation requirements are outlined in this manual and should be followed thoroughly to avoid inaccuracy or damage to the product.

It is also important to be aware of vehicle manufacturer policies before making modifications to the vehicle. Right Weigh, Inc. is not liable or responsible for issues regarding warranties with other manufacturers. This is the responsibility of the customer. If you are unsure about how these installation practices apply to your vehicle, please contact your vehicle or component manufacturer.

**FOLLOW US!**

