

RIGHT WEIGH



Installation Manual

WIRING HARNESS KIT

FOR SINGLE OR TANDEM AXLE GROUPS | 225-SK

For additional support contact:

Smart Truck Solutions
+61 418 622840
rightweigh.com.au

RIGHT WEIGH



Right Weigh, Inc.
Hillsboro, Oregon USA

PP-003-0066 Revision B
August 2020

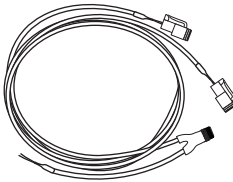
©2015-2020 Right Weigh, Inc. All rights reserved.

PARTS INCLUDED

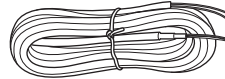


Before installation, the following parts should be properly installed onto the trailer:
Exterior Digital Scale
One or Two Strain Sensors

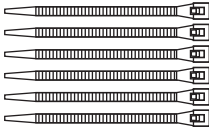
PARTS INCLUDED:



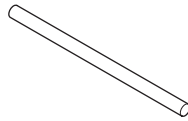
Strain Sensor Wiring Harness
RW #EL-004-0063



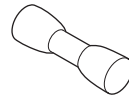
Extension Cable



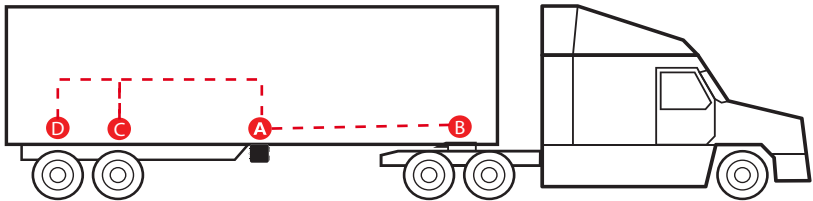
Zip Ties



Heat Shrink



Butt Connectors

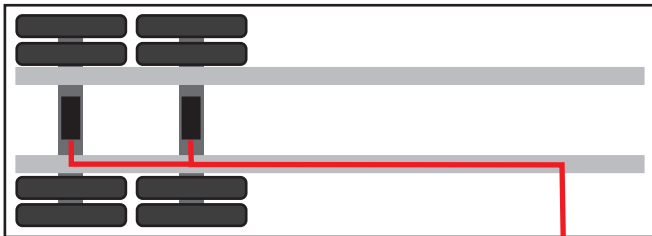


D

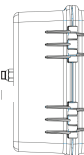
AXLE 2

C

AXLE 1



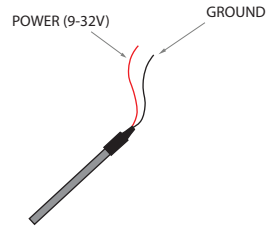
B
POWER AND
GROUND



A
201
SERIES
GAUGE

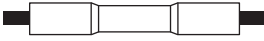
CONNECTING TO POWER & GROUND:

Connect the **RED** wire to a switched positive (+) power source and the **BLACK** wire to chassis ground (-). There is an extension cable included to reach the proper power source. The required supply voltage must be between 9 and 32 volts DC.



DO NOT connect directly to a battery or any constant power source, gauge should be connected to a switched source so that it can be disconnected from power when not in use. Most users connect to the vehicle marker lights or auxillary wire from the 7-way.

It is very important that all wiring connections be made watertight. Connections that aren't water tight can cause corrosion in wiring and cause the scale to lose power.



Crimp each end of the wire into the connector with a wire crimp tool (tool not provided).

After crimping and heat shrinking



With a heat gun or heat torch, heat the connector until it shrinks completely around each wire end. Make sure you do not burn the wire jacket.

Add heat shrink



After all connections have been made, heat shrink the entire group of splices so that it seals on the outer jacket of both cables.

After heat shrinking



DEUTSCH CONNECTORS:

Once the wiring harness and strain sensors have been installed, connect the wiring harness connector A to strain sensor A. Repeat for sensors B and C, if applicable.



Thank you for choosing to drive more and scale less! Here at Right Weigh, we are committed to making our products simple to install and easy to use. We understand that installation can vary between vehicles and yours may not be described in this manual. In any event, our technical support team is ready to answer your questions!



+61 418 622840



leigh@rwlsau.com.au



rightweigh.com.au

IMPORTANT!

Please read instructions COMPLETELY and thoroughly before installation. Right Weigh, Inc. is not responsible or liable for product failure or vehicle damage due to improper installation. The installation requirements are outlined in this manual and should be followed thoroughly to avoid inaccuracy or damage to the product.

It is also important to be aware of vehicle manufacturer policies before making modifications to the vehicle. Right Weigh, Inc. is not liable or responsible for issues regarding warranties with other manufacturers. This is the responsibility of the customer. If you are unsure about how these installation practices apply to your vehicle, please contact your vehicle or component manufacturer.

FOLLOW US!

