



# Installation Manual

## REMOTE SENSOR KIT

For 201 Series Gauges | RTK-01/-02

**THANK YOU  
FOR YOUR BUSINESS**

Thank you for choosing to drive more and scale less! Here at Right Weigh, we are committed to making our products simple to install and easy to use. We understand that installation can vary between vehicles and yours may not be described in this manual. In any event, our technical support team is ready to answer your questions!

**SCAN FOR ADDITIONAL RESOURCES**

RIGHT WEIGH



[rwls.com/manuals-resources/](https://www.rwls.com/manuals-resources/)

### CONTACT US FOR ADDITIONAL SUPPORT

United States and Canada:

Right Weigh, Inc.  
(503) 628-0838  
(888) 818-2058 - Toll Free (USA ONLY)  
[www.rwls.com](http://www.rwls.com)  
[support@rwls.com](mailto:support@rwls.com)

Australia and New Zealand:

Smart Truck Solutions  
+61 418 622840  
[rightweigh.com.au](http://rightweigh.com.au)



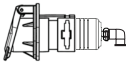
## IMPORTANT!

Please read instructions COMPLETELY and thoroughly before installation. Right Weigh, Inc. is not responsible or liable for product failure or vehicle damage due to improper installation. The installation requirements are outlined in this manual and should be followed thoroughly to avoid inaccuracy or damage to the product.

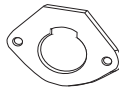
It is also important to be aware of vehicle manufacturer policies before making modifications to the vehicle. Right Weigh, Inc. is not liable or responsible for issues regarding warranties with other manufacturers. This is the responsibility of the customer. If you are unsure about how these installation practices apply to your vehicle, please contact your vehicle or component manufacturer.

## PARTS INCLUDED:

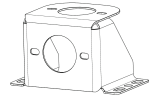
- 1** Data Communication Socket  
1 or 2 air sensors



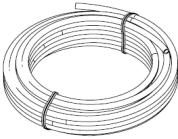
- 2** Gasket



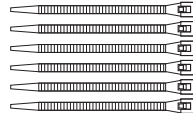
- 3** Mounting Bracket




- 4** 1/4" Air Line



- 5** Zip Ties



## HARDWARE INCLUDED:

- 6** 2 x 5/16" Mounting Bolt 

- 7** 2 x 5/16" Flat Washer 

- 8** 2 x 5/16" Nylon Insert Locknut 

- 9** 4 x 3/8-16 Hex Cap Screw 


- 10** 8 x 3/8" Flat Washer 

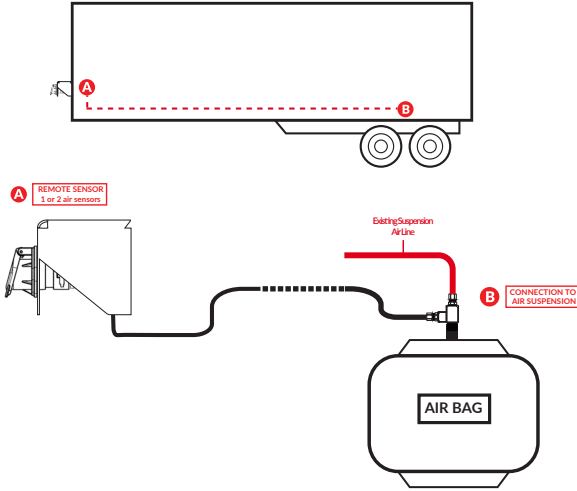
- 11** 4 x 3/8-16 Nylon Insert Lock Nut 

- 12** 1/4" NPT Street Tee Fitting 

- 13** 3/8" NPT Street Tee Fitting 

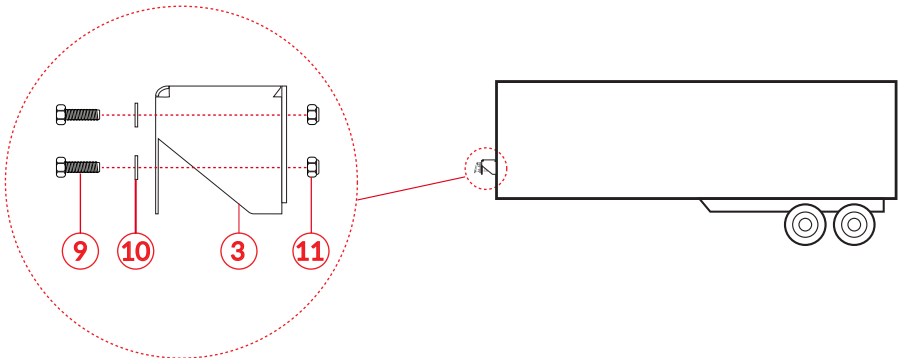
- 14** 3/8" NPT to 1/4" NPT Reducer Fitting 

- 15** 1/4" NPT to 1/4" Tube Fitting 

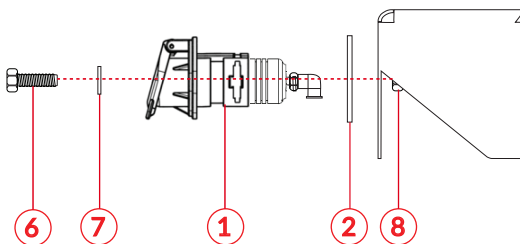


## A LOCATE MOUNTING BRACKET ONTO TRAILER

Locate the mounting bracket to the front of the trailer where it is accessible to the driver using the supplied hardware. Please use all 4 mounting locations on the bracket to fully secure the system to the trailer.



Once the mounting bracket is secure on the trailer, mount the data communication socket to the bracket using the supplied hardware.



## B INSTALL AIR LINE AND CONNECT TO AIR BAG(S)

Using the supplied hardware, tee into the any air bag connected to the axle group being measured. Run 1/4" air line from the air bag to the remote sensor. Use the provided zip ties to hold the air line in place. Connect the air line to the push-to-connect fitting on the back side of the remote sensor.

### Trailer with 2 HCV

Repeat this process for a trailer axle group with 2 HCV. Tee into a second air bag on the trailer axle group that is connected to the second HCV. Using the provided air line and zip ties, run the air line to the remote sensor and connect to the second push-to-connect fitting. It does not matter which fitting each go into as long as there is an air line connection to an air bag connected to each HCV on the trailer axle group to accurately measure the weight.

